



# GG News

## 23<sup>rd</sup> January 2026

It has been yet another great week in school if not a little damp at times! We have been so proud of the children lately in the way they play during wet breaks – sharing the class games, chatting, drawing and enjoying a sociable time. We do take them out to break sometimes when it's raining and always when it's cold – please make sure they have coats with them every day.

If you would be interested in a lunchtime supervisors role, contact our school business manager, Mrs Gaynor Carrigan, for more details. [sbm@georgiangardens.co.uk](mailto:sbm@georgiangardens.co.uk)

Once again, unfortunately, we need to remind you about car park etiquette. You must only park in there if you have a school permit (or blues badge). If dropping off early for The Hive you need to drive carefully and leave the car park before 8:15 at the very latest to allow staff space to park.



### Star of the week

|            |         |            |         |            |        |            |           |
|------------|---------|------------|---------|------------|--------|------------|-----------|
| <b>1HK</b> | Elliott | <b>1KM</b> | Xavi    | <b>2CA</b> | Reggie | <b>2LN</b> | Myla-Rose |
| <b>3VW</b> | Reggie  | <b>3HC</b> | Jett    | <b>4KC</b> | Bella  | <b>4TF</b> | Luke      |
| <b>5RD</b> | Evie    | <b>5CT</b> | Elliott | <b>6HB</b> | Oscar  | <b>6BA</b> | Fletcher  |

### Attendance

The class with the highest attendance in the past week:

**1HK 99.3%**(they will have 15 minutes choice of a treat next week).

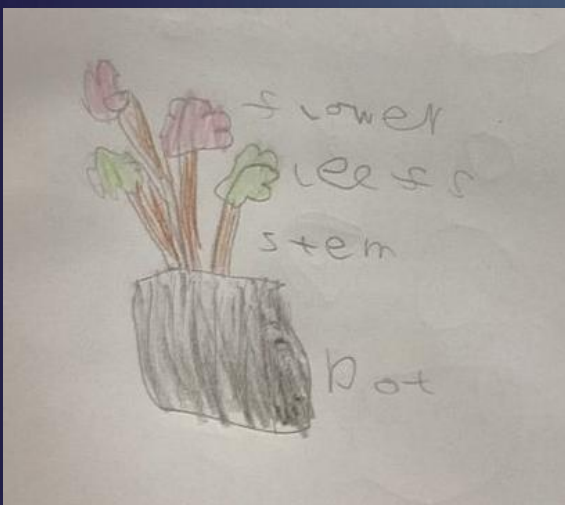
The child with 100% attendance in this last week, chosen by a random generator:

**Penny C 1KM** she gets to choose a book from Miss Bowers' selection of prize books.

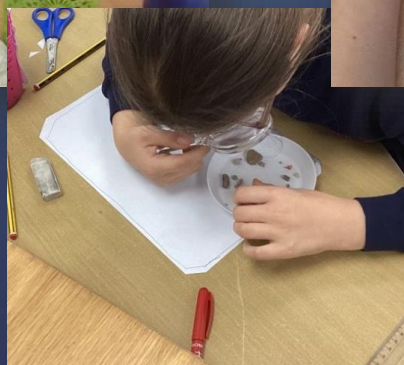


# 23<sup>rd</sup> January 2026

Y1 have been learning all about plants in Science. They learnt about the different parts of the plant and labelled them. They made our own plants. they also drew plants and flowers and labelled them.



Year 6 looked at a range of fossils. We discussed textures and had a go at identifying where they had come from.



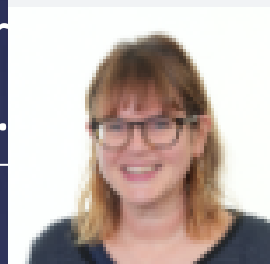


Governor Focus: We continue our series on the governing body with details on some more of its members – both of whom you may already recognise!



Mrs Helen Meakins:

Helen is the leader of the Reception Year, Year One and Year Two. She has taught at Georgian Gardens since 1997 and is passionate about the education and welfare of young children. She has personally inducted over 1000 children in to school. Helen is married to Dominic and has 2 children , both of whom attended Georgian Gardens. Originally elected as a staff governor she was re-appointed as a co-opted governor in 2015. Helen is also a governor at Chatsmore Catholic High School in Goring.



Mrs Emily Roberts:

Emily lives in Littlehampton with her husband and three children. Before qualifying as a teacher, thirteen years ago, she did a degree in psychology and worked in schools supporting the transition of children with autistic spectrum disorder from home programmes into the mainstream. Emily taught at Georgian Gardens for ten years. She worked part-time while her children were young and was then a full-time class teacher here for seven years. Two of her own children have been educated at Georgian Gardens.





Page 4

# GG News

## 23<sup>rd</sup> January 2026

Tuesday saw the Year 3 and 4 Footballers take on our locality schools in a tournament. On the astro at The Angmering School, the children showed off their football skills and teamwork. They worked hard and both teams came 3<sup>rd</sup> overall. Well done to those who took part. Thanks to Mr Cook and Mrs Smith for being team managers!



### DATES FOR YOUR DIARY

World Book Day (dress up)  
Thurs 5<sup>th</sup> March

Art week 9 – 13<sup>th</sup> Feb  
Exhibition after school Fri 13<sup>th</sup> Feb

|                                   |  |                        |   |
|-----------------------------------|--|------------------------|---|
| Parents’ Evenings<br>3:30pm – 6pm | <del>Mon 20<sup>th</sup> Oct / Wed 22<sup>nd</sup> Oct</del>               |                        | *Wed 25 <sup>th</sup> Feb/Thurs 26 <sup>th</sup> Feb*<br><small>Date changed to allow for book fair</small> |
| Open Classrooms<br>From 2:45pm    | <del>Mon 24 Nov</del>  | 23 <sup>rd</sup> March | 22 <sup>nd</sup> June   |
| Sports Day<br>KS1 am KS2 pm       | Thursday 18 <sup>th</sup> June (back up 25 <sup>th</sup> June)             |                        |   |
| Summer Fair<br>3:30 – 5:15pm      | *** New Date *** Fri 26 <sup>th</sup> June                                 |                        |   |
| Y6 production<br>1:30pm / 6:30pm  | Tues 14 <sup>th</sup> July pm / Thurs 16 <sup>th</sup> July pm and evening |                        |   |
| Y6 presentation eve 6pm – 7pm     | Mon 20 <sup>th</sup> July  |                        |   |